



THE FINEST DEPARTMENT STORE IN NORWICH • EST 1770



JARROLD



Norwich

The City of Stories

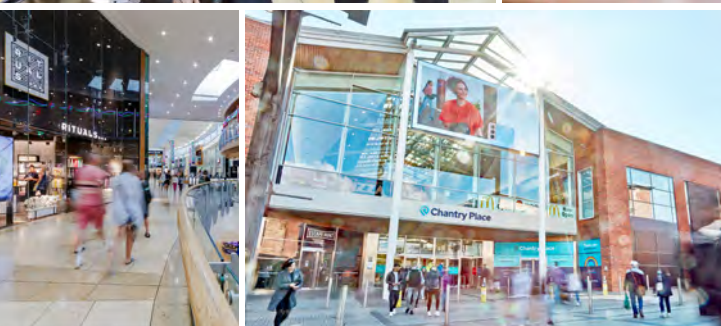


THE PLACE TO BE!



FASHION • HOME • LIFESTYLE

Plus enjoy three restaurants, seafood bar, delicatessen, walk-in cheese room, wine bars, foodhall and a specialist coffee bar.



Enjoy over 90 fantastic shops, cafés and restaurants in the heart of Norwich, with convenient city centre parking.

ChantryPlace.co.uk

Chantry Place
Destination shopping!



LONDON STREET • NORWICH • JARROLD.CO.UK

Map & Guide FREE



For more information go to
visitnorwich.co.uk

#CityOfStories



Elm Hill

Dive into Norwich's independent scene



The Lanes Fayre



Café Gelato, Opie Street

We can't forget the city's shopping experiences. Find every shop you need, all within walking distance from each other. Enjoy the hustle and bustle of The Lanes and the beauty of the Royal Arcade, or treat yourself to something new in Jarrod, Chantry Place, and Castle Quarter! Whether you're looking to turn back time, or enjoy the here and now, this city has it all. It's just up to you to discover it...

Norwich was built on independent spirit. Look into the city's history and you'll find mavericks, rebels and trailblazers – we're famous for our firsts and foremost.

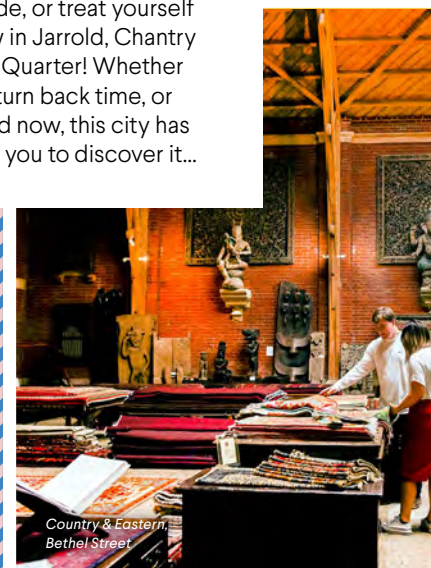
Today, Norwich is home to hundreds of one-of-a-kind businesses, as well as famous names. And the food and drink here is like nowhere else in the UK. There's restaurants offering diverse and delicious food, cocktail bars pouring out creativity in every glass, and pubs for all your needs. Here in Norwich, we're sure you'll find something new to relish with each turning of a corner.



Yard, Pottergate



Norwich Theatre Playhouse Bar



Country & Eastern, Bethel Street

Welcome to Norwich, the City of Stories.

Norwich. Situated on a river, the city has grown from a Norman stronghold into a place bursting with culture, history, natural beauty and more. Discover street-food from around the world, urban artists with their own tale to tell, waymarked routes to inspirational places and shops that celebrate our independent spirit.

Everyone is welcome in the City of Stories. And there's something for everyone here. Whether you want to be transported back in time through Norwich's historic streets and buildings, have fun outdoors with the family, take a romantic escape or enjoy great food and drink with friends.

Head to visitnorwich.co.uk for what's on, where to stay and more >>>



Gonzo's, London Street



The Garnet, Market Place



Yalm Foodhall, Royal Arcade

Discover the City of Stories



Uncover beautiful Victorian gardens tucked away, two towering cathedrals, museums, an entire National Park, and how could you miss our famous Castle? Uncover a bit of history where you stay too, from the oldest hotel in the country (The Maid's Head), to gorgeous Georgian luxury (The Assembly House). Whatever you do in Norwich, we're sure it'll be unlike anything you've done before.



The Royal Arcade

A small city with plenty to discover, don't let Norwich's size fool you. This is a place with a story to tell. Look back on our rich past while enjoying what's here in the modern day – the cobbled streets with historic pubs, hidden courtyards and pocket parks with quaint cafes, and buildings frozen in time, not far from the brand-new.



St Peter Mancroft



The River Wensum



Tombland



Chapelfield Gardens



Eaton Park



St Andrews Street



Cinema City, St Andrews Street

Go to visitnorwich.co.uk for information on what's on, from music events and festivals to urban art trails, exhibitions and so much more.



Norwich Theatre Royal



Norwich Market and Castle

Explore Norwich Cathedral



Find your next Creative Experience at Norwich Theatre



norwichtheatre.org

With 5 floors to explore there is always a reason to visit whether you want to Shop, Dine, Watch or Play you will find it all at Castle Quarter in Norwich.

- OVER 50 SHOPS
- 8 SCREEN VUE CINEMA
- BOOM BATTLE BAR
- RETRO REPLAY ARCADE
- VECTOR VR
- SPY MISSIONS
- 14 LANE SUPERBOWL UK
- 24 HOUR PUREGYM
- CASTLE SOCIAL
- HOT POD YOGA
- ESCAPE HUNT
- PUTT PUTT NOODLE INDOOR GOLF
- SILHOUETTE

Take a ride into the City...

parks&ride

- BUSES UP TO EVERY 20 MINS
- 7 DAYS A WEEK**
- 4 DIFFERENT SITES
- SAVE ON CITY CENTRE PARKING
- £5.50 GROUP TRAVEL OFFER

www.konectbus.co.uk

**Sundays run only from Thicketham.
*Max of 5 people any time at the weekend and after 10am weekdays.

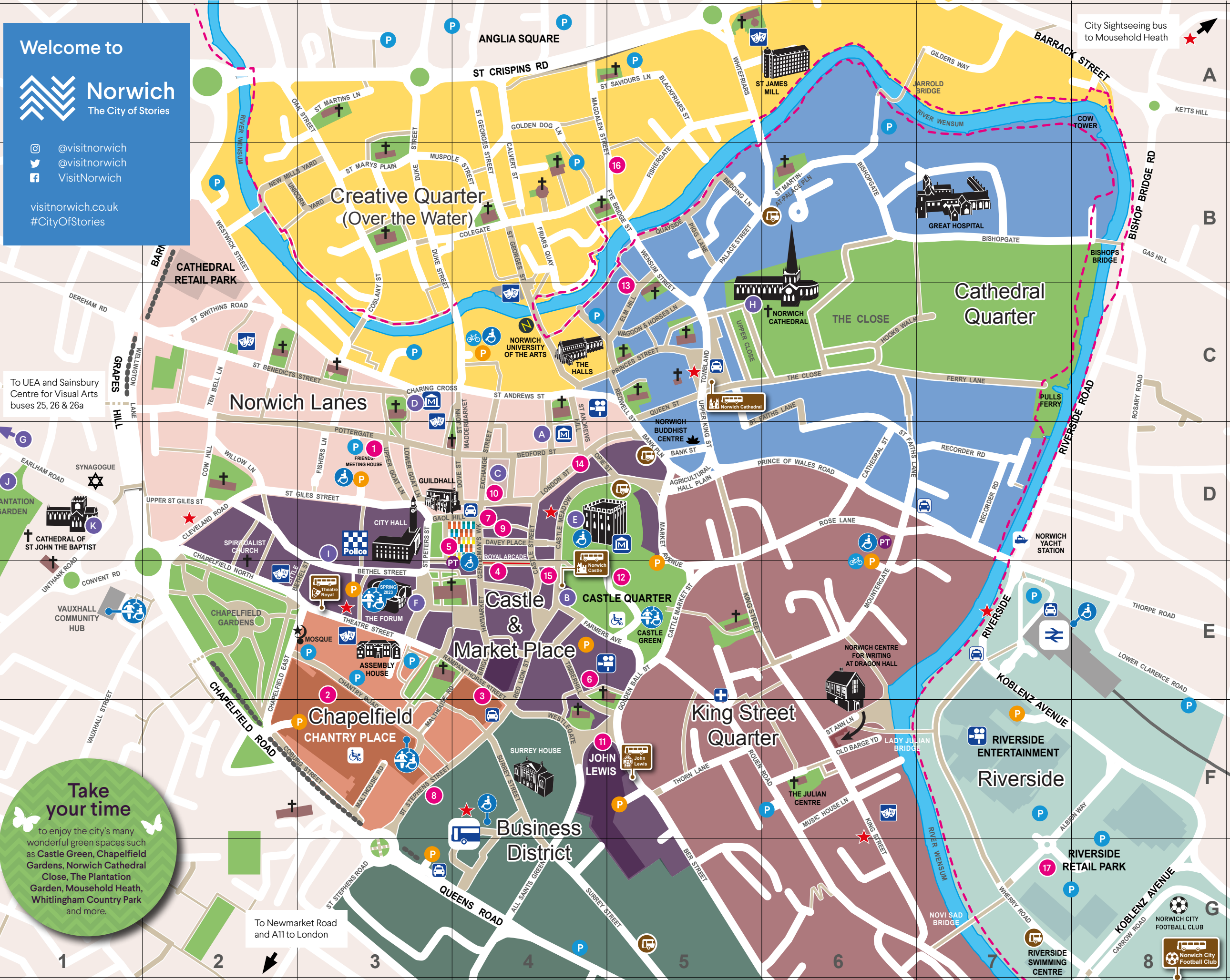
CitySightseeing Norwich

Open Top Tour with 9 Stops. Hop On, Hop Off. Informative commentary.

Save £2 Per Person

With your Park & Ride Ticket!

Tickets from the driver • Operates April - October
Find us on Castle Meadow • www.city-sightseeing.com
Starts at Castle Meadow at 11:00, 12:00, 14:00 & 15:00



Welcome to

Norwich
The City of Stories

@visitnorwich
@visitnorwich
VisitNorwich

visitnorwich.co.uk
#CityOfStories

Take your time

to enjoy the city's many wonderful green spaces such as Castle Green, Chapelfield Gardens, Norwich Cathedral Close, The Plantation Garden, Mousehold Heath, Whittingham Country Park and more.

Key:

- Shopping**
 - Norwich Lanes
 - Chantry Place Shopping Centre
 - Marks and Spencer
 - Royal Arcade
 - Norwich Market
 - Timberhill
 - Gentleman's Walk
 - St Stephens Street
 - Davey Place
 - Jarrod
 - John Lewis
 - Castle Quarter Shopping Centre
 - Elm Hill
 - London Street
 - Castle Street
 - Magdalen Street
 - Riverside Entertainment & Retail Park

- Norwich Attractions**
 - Museum of Norwich at The Bridewell
 - City Sightseeing Tours
 - Jarrod
 - Strangers' Hall
 - Norwich Castle Museum & Art Gallery
 - The Forum
 - Sainsbury Centre for Visual Arts
 - Norwich Cathedral
 - The South Asia Collection Museum and Shop
 - The Plantation Garden
 - Cathedral of St John the Baptist

- ★ City Sightseeing Bus Stops
- P Surface car parks
- P Multi-storey car parks
- Secure cycle parking
- Cinemas
- Theatres/cultural venues
- Museums
- Bus station
- Train station
- NHS Walk-in Centre
- Shopmobility
- Public toilets
- 'Changing Places' toilet (RADAR key disabled accessible)
- Accessible toilet (RADAR key disabled accessible)
- Norwich Market
- Taxi ranks - full time
- Taxi ranks - part time
- Coach drop off points
- Riverside walk/pathway
- City wall
- Norwich 12 buildings
- Churches
- Restricted traffic streets
- Parks, gardens and green spaces
- Norwich University of the Arts

Getting about

Parking

Norwich has plenty of car parks in the city centre - see map for locations. And there are four Park & Ride services, including Norwich Airport.

Buses

Norwich Bus Station is a short walk from the city centre. Or, take the Norwich Park & Ride into the city to get £2 off City Sightseeing tickets.

Rail

The train station is just a short walk from the city centre, with The Broads National Park only 15 minutes away by rail (Wroxham), and beautiful beaches just over a half-hour train journey (Cromer).

Cycling

norwich.gov.uk/cycling provides information on Norwich's cycle routes. A secure cycle park is located at St Andrew's car park.

Accessibility

For Shopmobility at Castle Quarter, call 01603 624499.

Look out for our friendly City Hosts

Made up from local volunteers, passionate about Norwich, you can find them located around the city come rain or shine. Whether you need directions, recommendations, information about events, or are just after a friendly chat, our City Hosts will be there to welcome, guide and assist you. Look out for 'Here to Help' blue tabards to find them.

Business District

Our commercial and financial centre. See the remains of the ancient city wall where St Stephen's Gate once stood and where Queen Elizabeth I arrived in 1578. Here you'll find the Norwich Bus Station, the hub of getting you to wherever you need to go in and around our fine city.

Creative Quarter (Over the Water)

Known as 'Over the Water' since the 13th century, this is where the Anglo-Saxons are said to have first settled. Visit St Andrew's Hall & Blackfriars' Hall, the most complete medieval friary complex surviving in England.

Castle & Marketplace

Above the city, Norwich Castle keeps watch. Beneath its shadow, the award-winning outdoor market tempts you with around-the-world street food, pop-up shops, and traditional stalls.

King Street Quarter

We're England's first UNESCO City of Literature, and the National Centre for Writing is found at 15th-century Dragon Hall, nurturing new talent within its walls and around the world.

Cathedral Quarter

Our Norman Cathedral dominates the Norfolk skyline with its famous 315-foot spire. Elm Hill is one of the most complete medieval streets in the UK, and Cow Tower has defended the River Wensum since the 1300s.

Riverside

Our station, a place of many excited arrivals, connects us to cities such as London, Manchester, Cambridge, and Nottingham. Our iconic stadium, Carrow Road, is just round the corner and home to our high-flying Canaries and the oldest chant in football history, On the Ball City!

Chapelfield

Once enclosed by 14th-century city walls, this is a place of stories. The garden, an oasis of beauty, comes alive with fairs and events. And the old chocolate factory is now the site of our modern shopping centre, Chantry Place.

Norwich Lanes

Welcome to our city's independent heart, winner of the Great British High Street. The Guildhall, England's largest medieval city hall, stands at the gateway of the Norwich Lanes. Along these cobbled streets, independent shops, restaurants and galleries nestle side by side.



Published by VisitNorwich, Norwich, Norfolk, Great Britain, as part of Norwich Business Improvement District and in partnership with Norwich City Council. VisitNorwich and Norwich City Council cannot accept any responsibility for any error or omission which may have occurred. © Copyright and database right 2023. Ordnance Survey 100019747. Designed by Ark designpark.co.uk Printed by barnwellprint.co.uk

